

Informal Adult & Community Learning as a Building Block

Simon Beer

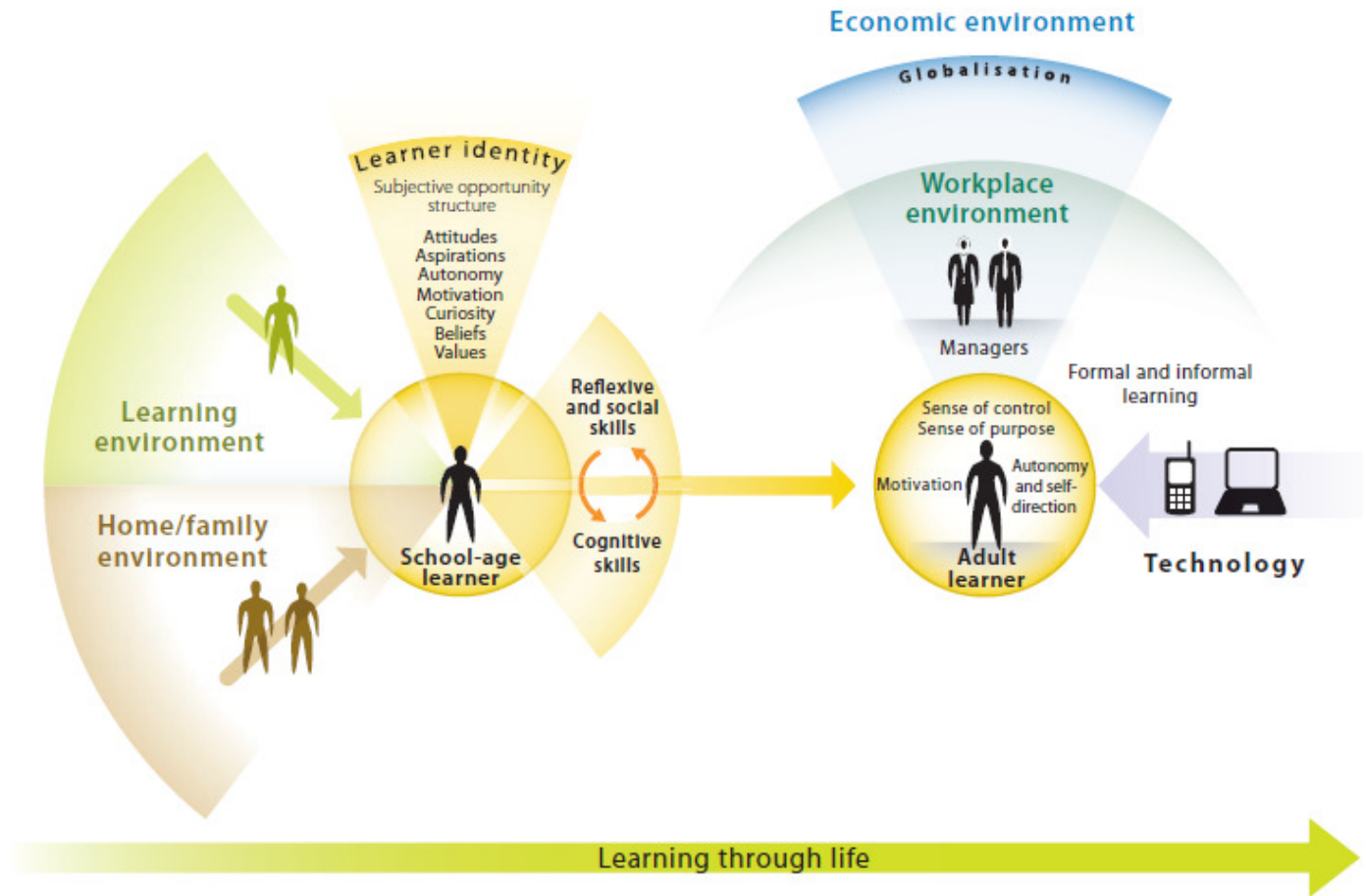
Senior Policy Consultant LGA

Programme Manager NIACE

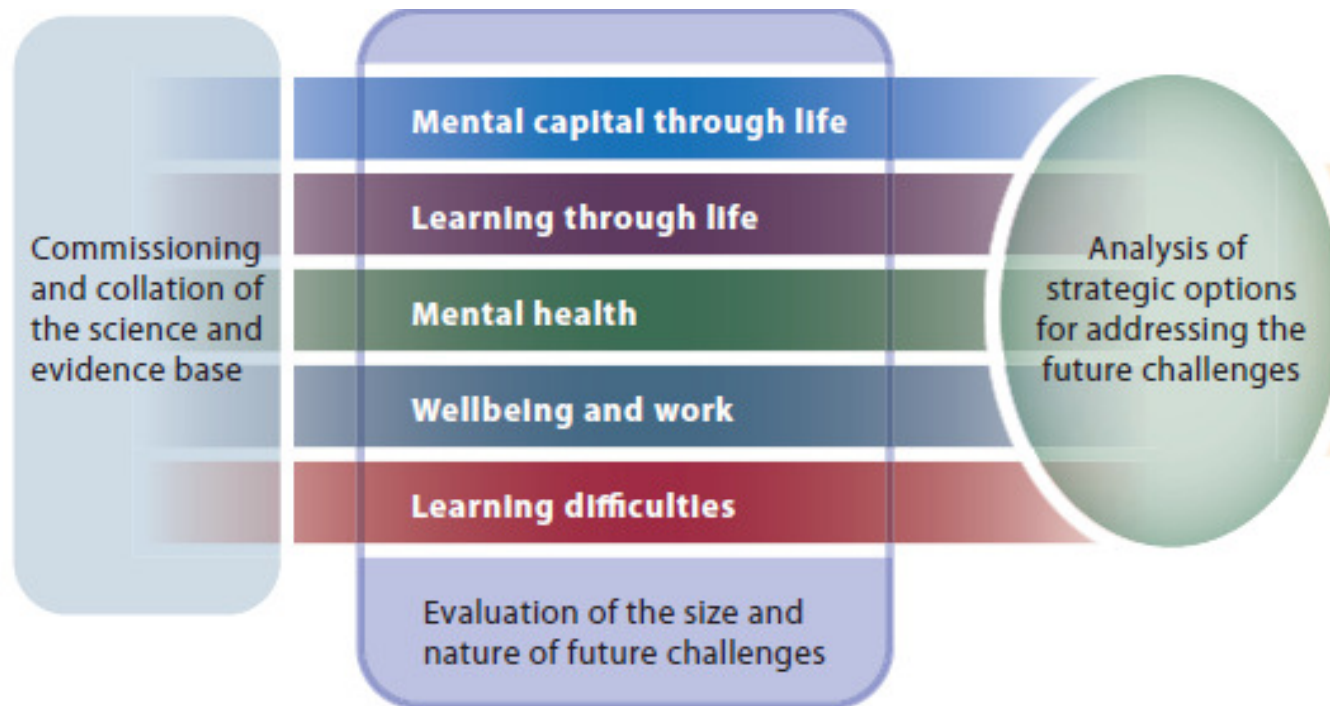
IACL

- Building block for what?
- Govt IACL Review
- Return on IACL Investment
- Colleges and their Communities
- Poverty
- Adult Learners Week

IACL – Throughout Life



IACL and Wellbeing



Informal Adult and Community Learning (IACL) review

IACL review emphasis on:

- helping build [a big?] society, engaging and motivating disadvantaged groups , creating progression pathways towards the wider learning continuum, skills or employment.

In delivering community learning:

- focus on supporting disadvantaged people and encouraging them to engage with learning, balanced with fee generation from people who can afford to pay
- need to demonstrate value for money and impact on people, families and communities, with minimal bureaucracy
- there should be a good match between informal ACL learner profiles and local demographic profiles.

What is Social Return on Investment (SROI)?

Our activities create and destroy value: they change the world around us – SROI is a framework for measuring and accounting for this much broader concept of value.

The questions

- Who changes?
- How do they change?
- How do we measure it?
- What's it worth? (Relative to other things)
- What would have happened anyway?

Colleges in their Communities: Aim

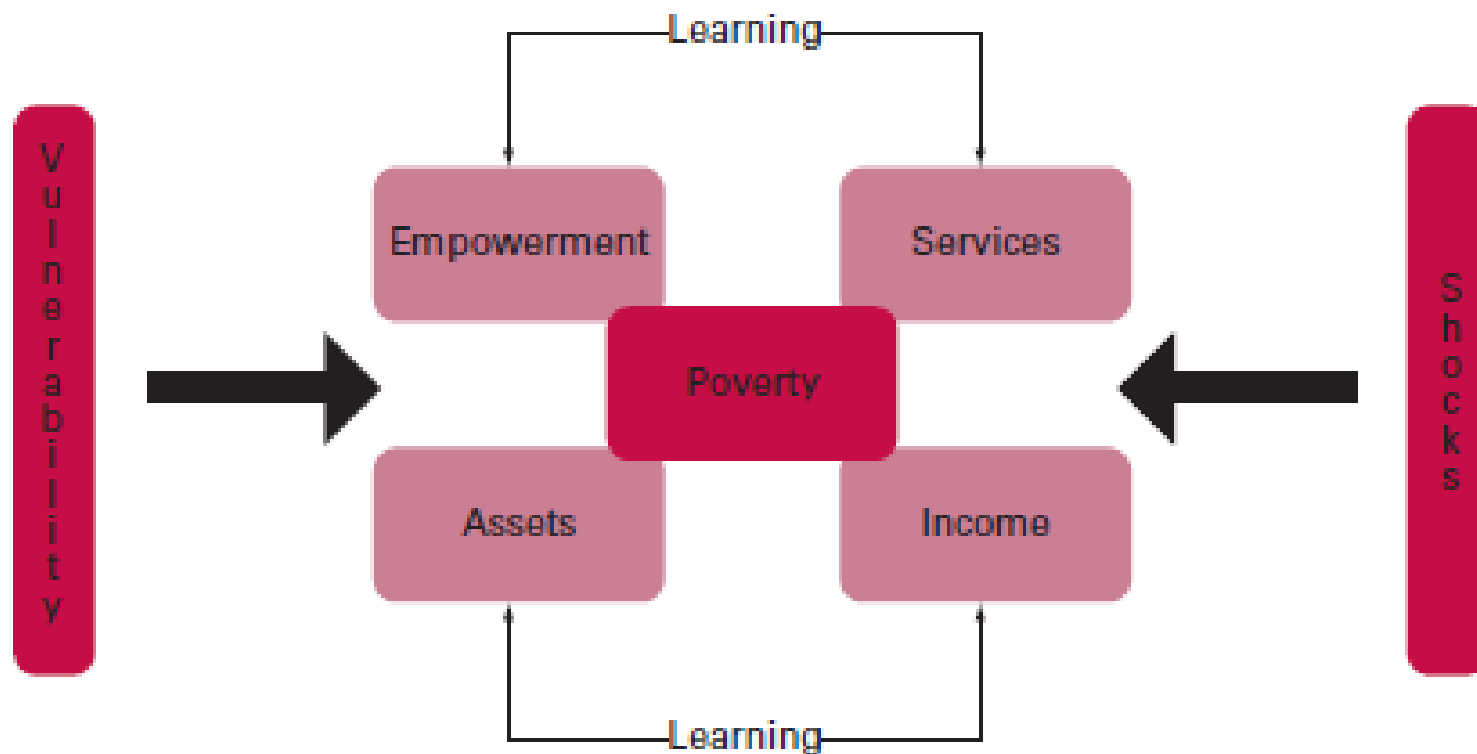
- report on colleges' strategic role and the added value they bring in leading and serving their communities and adult learners...
- ...at a time when colleges are taking local responsibility for the shape and balance of the educational offer to their locality
- <http://www.niace.org.uk/current-work/colleges-in-their-communities-inquiry>

Communities

‘the plural is helpful reminder of the plurality of communities both in terms of groups of people (‘community groups’), but also of *types* of community (of practice and of interest, as well as virtual ones). The radical adult education tradition sees ‘communities’ referring to ‘specified groups of actual people, not society as a whole and certainly not a market ...[using] the term to indicate the ‘place’ and ‘moment’ of engagement with specific groups of people around their interests.’

Jackson in *Adult Learning, Critical Intelligence and Social Change* Ed. Mayo and Thompson (1995) p.188

Schematic representation of the poverty framework



Where to get information, ready-made activities and free resources:

- Adult Learners' Week website
- Campaign for Learning website
- BBC and other media
- Campaigns and promotions
- Government websites



Adult Learners Week and related campaigns

- Adult Learners Week May 12-18 2012
(www.alw.org.uk/learning-awards)
- Sign Up Now
- Quick reads
- Learning at Work Day
- Silver Surfers Day